

BrightStart
A Stronger Louisiana
Begins in Early Childhood

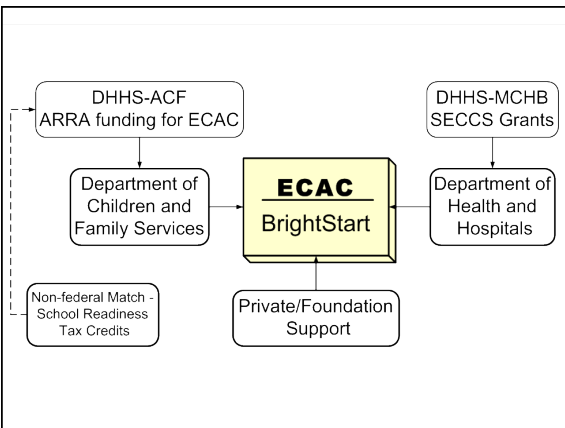
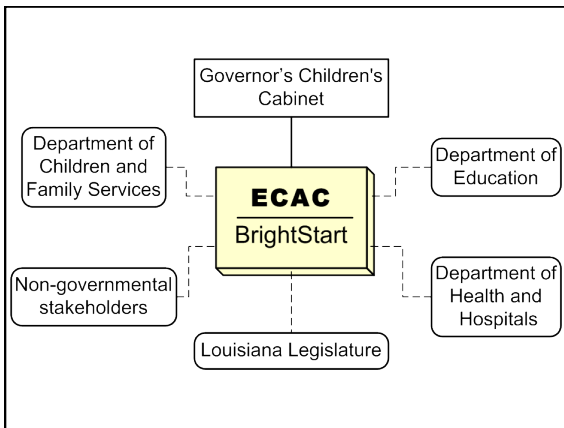
Building A Statewide Comprehensive Early Childhood System: Louisiana's Lessons Learned

Geoffrey Nagle, PhD, LCSW, MPH
Tulane University
Institute of Infant and Early Childhood Mental Health

BrightStart
A Stronger Louisiana
Begins in Early Childhood

Louisiana's Early Childhood Advisory Council

BRIGHTSTART



BrightStart
A Stronger Louisiana
Begins in Early Childhood

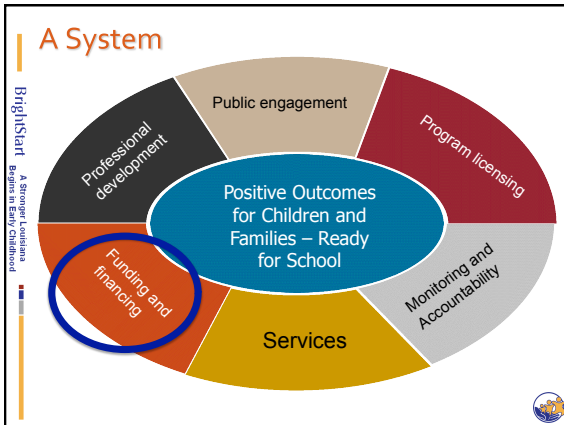
The Goal of BrightStart

- To develop, maintain and strengthen systems integration and partnerships to enhance children's ability to enter school healthy and ready to learn.

BrightStart
A Stronger Louisiana
Begins in Early Childhood

Building a System

- Building a durable, coordinated and effective system requires that a simultaneous and appropriate investment be made to build and support the infrastructure.



EARLY CHILDHOOD SYSTEM INTEGRATION BUDGET

BrigitStart
A Stronger Louisiana
Begins in Early Childhood

- ### Basic Assumptions
- The budget is the most significant **POLICY DOCUMENT** used in government planning.
 - "The budget process is the spinal column of public policymaking."¹
 - A cross-system plan without a cross-system budget is difficult to implement.
- ¹Nathan, R. P. Handbook for Appointed Officials in America's Governments, Chapter 5, Page 42. Available at www.rockinst.org/pdf/government_reform/2008-handbook_for_appointed_officials_in_america%27s_governments.pdf
- BrigitStart
A Stronger Louisiana
Begins in Early Childhood

- ### Early Childhood System Integration Budget
- Looks at resources for children less than age 5
 - Formatted by categories
 - Includes
 - description
 - source of funds
 - population served
 - geographic areas served
- BrigitStart
A Stronger Louisiana
Begins in Early Childhood

- ### ECSIB
- No right answers
 - Simply shows the resources and programs in the priority areas
 - Context?
 - 310,000 children under age 5 (7.2%)
 - 30% of children under age 5 live in poverty
- BrigitStart
A Stronger Louisiana
Begins in Early Childhood

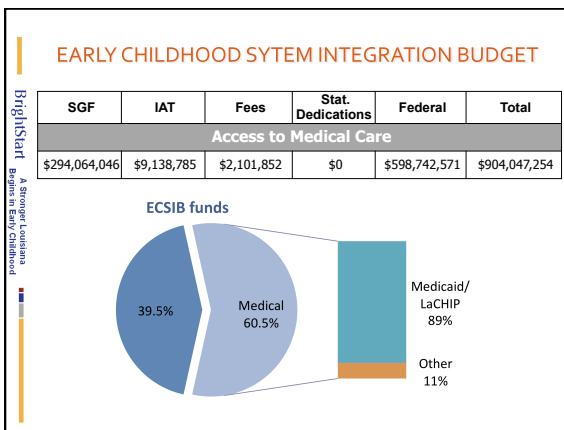
ECSIB

Early Care and Education	State General Fund	Federal Funds	Total Funds
Public Pre-K	\$6,421,497	\$68,550,000	\$75,971,497
NSECD	\$0	\$7,500,000	\$7,500,000
Head Start	\$35,000	\$175,000	\$210,000
Child Care Subsidy Program	\$7,500,000	\$109,804,670	\$117,304,670
Totals	\$13,956,497	\$186,029,670	\$200,986,167

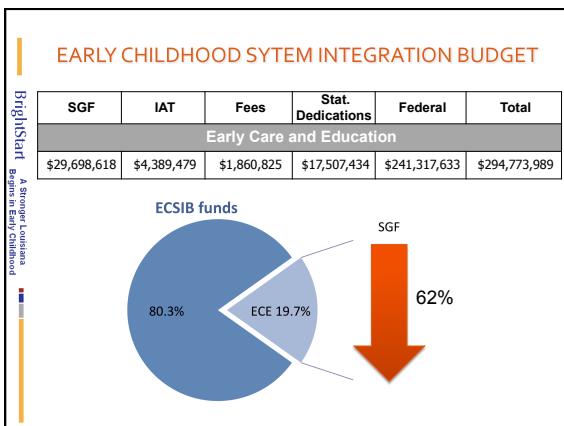
BrigitStart
A Stronger Louisiana
Begins in Early Childhood

EARLY CHILDHOOD SYTEM INTEGRATION BUDGET					
FY 11					
SGF	IAT	Fees	Stat. Dedications	Federal	Total
Access to Medical Care					
\$294,064,046	\$9,138,785	\$2,101,852	\$0	\$598,742,571	\$904,047,254
Early Care and Education					
\$29,698,618	\$4,389,479	\$1,860,825	\$17,507,434	\$241,317,633	\$294,773,989
Family Support and Parenting Education					
\$34,712,991	\$10,144,910	\$5,701,573	\$93,000	\$237,516,183	\$288,168,657
Mental Health and Social-Emotional Development					
\$969,520	\$184,033	\$0	\$0	\$5,827,108	\$6,980,661
EARLY CHILDHOOD SYTEM INTEGRATION BUDGET TOTALS					
\$359,445,175	\$23,857,207	\$9,664,250	\$17,600,434	\$1,083,403,495	\$1,493,970,561

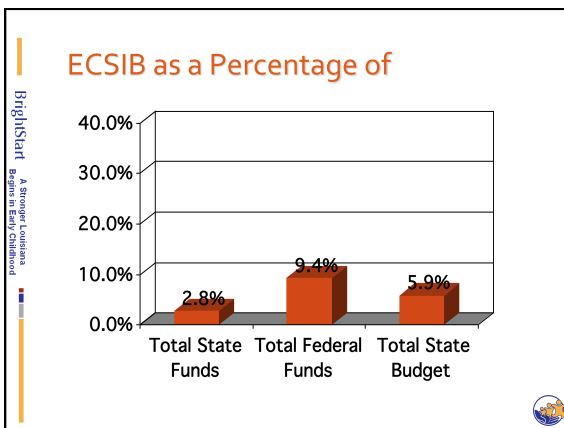
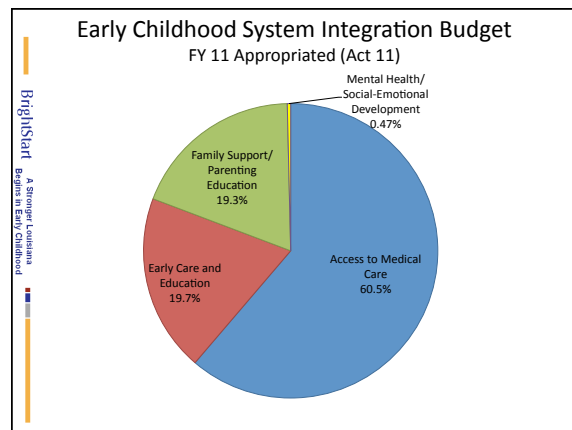
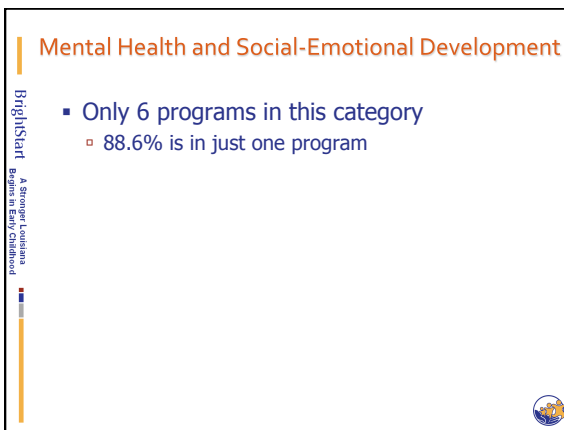
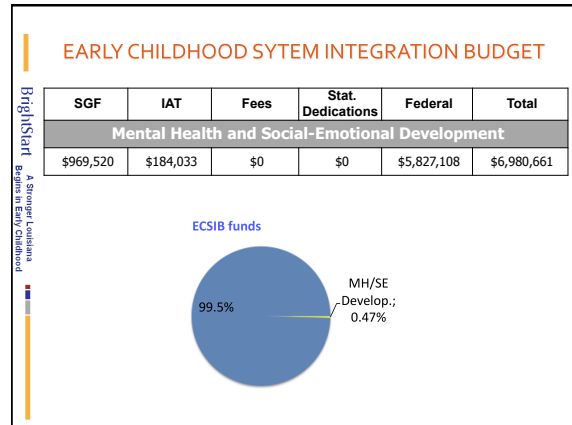
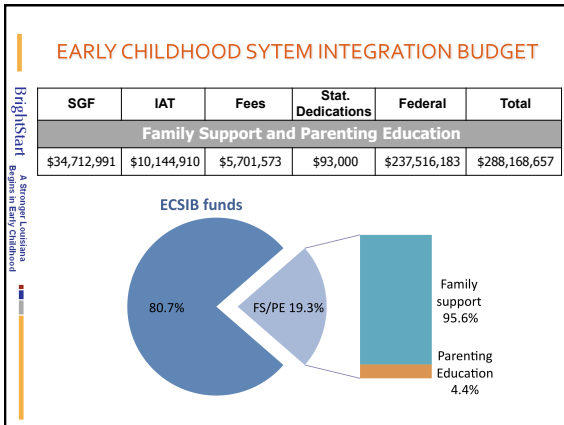
EARLY CHILDHOOD SYTEM INTEGRATION BUDGET					
Changes from FY 10 to FY 11					
SGF	IAT	Fees	Stat. Dedications	Federal	Total
Access to Medical Care					
\$61,273,810	(\$89,583)	\$916,741	\$0	\$9,815,109	\$71,916,077
Early Care and Education					
(\$49,246,396)	\$208,936	\$71,232	\$3,827,799	\$35,625,712	(\$9,512,717)
Family Support and Parenting Education					
(\$7,064,701)	\$102,921	\$81,000	\$0	\$11,311,113	\$4,430,333
Mental Health and Social-Emotional Development					
(\$1,558)	\$0	\$0	\$0	\$950,000	\$948,442
EARLY CHILDHOOD SYTEM INTEGRATION BUDGET TOTALS					
\$4,961,155	\$222,274	\$1,068,973	\$3,827,799	\$57,701,934	\$67,782,135



- ### Access to Medical Care
- Overall increase of \$71 million (8.6%)
 - Increase of \$79.7 to Medicaid (\$59.9 million SGF and \$20 million federal)
 - Due to increase in participation and FMAP change
 - Reduction in WIC program of \$16 million (22.4%) all federal dollars
 - New initiative – Birth Outcomes Project
 - 10 programs in this category



- ### Early Care and Education
- Overall decrease of \$9.5 million (3.1%)
 - Reduction of \$49.2 million of SGF (62.4%)
 - Increase of \$35.6 million of federal
 - Pre-K
 - LA 4 - \$40 million MOF swap (SGF for TANF)
 - 8(g) - \$2.8 million increase (statutory dedication) – 20.6%
 - Ensuring Literacy and Numeracy for All
 - Reduction of \$7.4 million of SGF (38%)
 - 15 programs in this category



BrightStart
A Stronger Louisiana Begins in Early Childhood

Care for them **now**.
Watch what they **become**.

Resources

- We have gathered together some resources that may be helpful in learning more about early childhood and ways you can find support, or offer support.
- Center on the Developing Child at Harvard University
- Louisiana Chapter of the American Academy of Pediatrics
- Louisiana Maternal and Child Health Coalition
- 211 Directory of Social Services
- Louisiana Parenting Education Network (LAPEN)
- LaCHIP Online Application and Information
- Quality Start Child Care Rating System
- Video Series on Early Childhood Science - Presentations from Harvard University's Center on the Developing Child

Reports

- FY 2011 Early Childhood System Integration Budget
- FY 2010 Early Childhood System Integration Budget
- Better Outcomes for All: Promoting Partnerships between Head Start and State Pre-K
- Beyond the School Yard: Pre-K Collaborations with Community-Based Partners

www.brightstartla.org

Sign Up!
Click for more information

Contact Us
Louisiana Partnership for Children and Families

Quality Start

Louisiana's Quality Rating System For Child Care Centers

Quality Start – Louisiana's QRIS

- Recognize the quality of child care being offered by child care providers
- Build and sustain quality child care
- Inform parents about the quality of child care



Integrating Social-Emotional Development in the Rating System

- **Environment Rating Scales**
 - Social-Emotional Subscale
- **Mental Health Consultation**
 - Reflective Supervision
- **Social-Emotional Screening**
 - Training
 - Warm Line



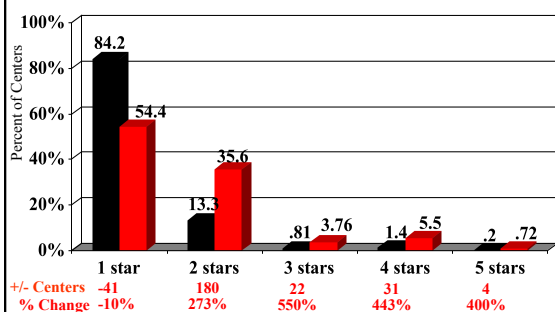
Social-Emotional Subscale

- **ITERS-R**
 - Listening and Talking
 - Interaction
 - Program Structure
- **ECERS-R**
 - Language-Reasoning
 - Interaction
 - Program Structure



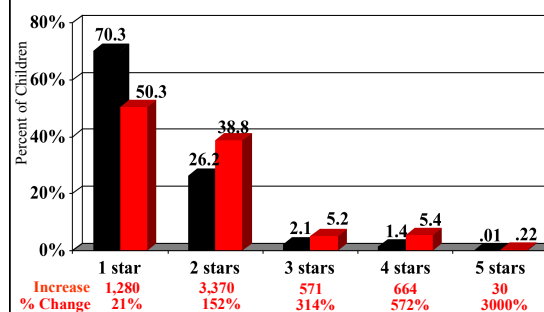
Licensed Centers Participating

■ Jan. 2009 ■ Aug. 2010



CCAP Children by Star Level

■ Nov. 2009 ■ Jul. 2010



BrigitStart
A Stronger Louisiana
Begins in Early Childhood

SCHOOL READINESS TAX CREDITS

Long Term Funding for Quality Child Care

BrigitStart
A Stronger Louisiana
Begins in Early Childhood

School Readiness Tax Credits

- Package of 4 Tax Credits
 - Credits to Providers
 - Credits to Directors and Teachers
 - Credits to Business for Supporting Child Care
 - Credits to Parents/Consumers

BrigitStart
A Stronger Louisiana
Begins in Early Childhood

TAX CREDITS TO CHILD CARE PROVIDERS

BrigitStart
A Stronger Louisiana
Begins in Early Childhood

Tax Credits to Providers

Star Rating	Tax Credit (per child in CCAP/foster care)
★★★★★	\$1,500
★★★★	\$1,250
★★★	\$1,000
★★	\$750
1 Star (or not participating)	No credit

BrigitStart
A Stronger Louisiana
Begins in Early Childhood

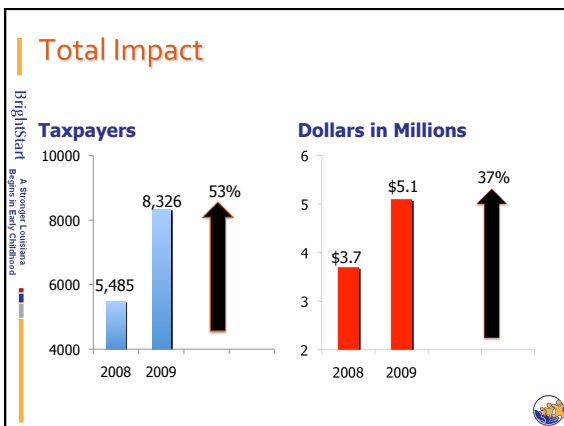
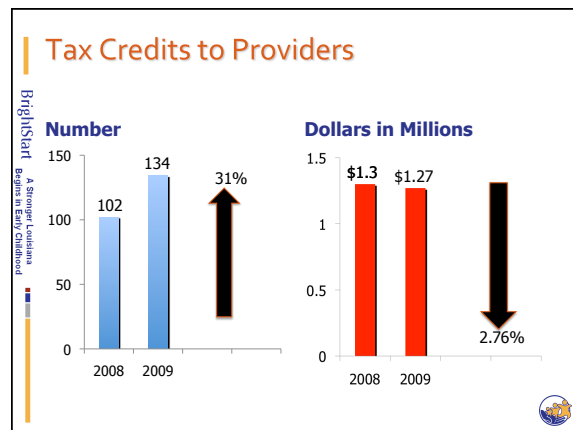
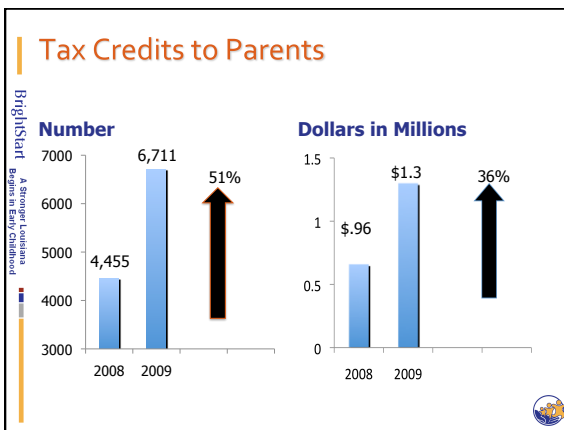
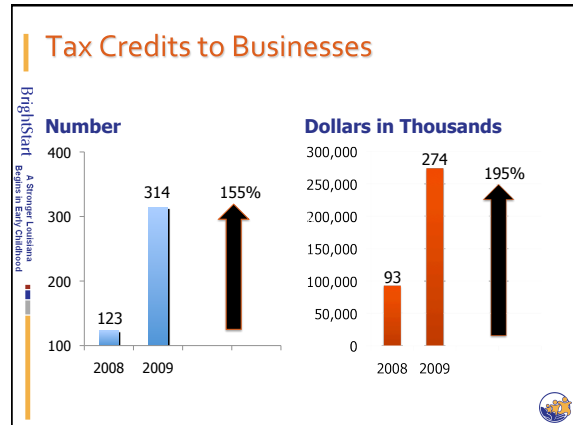
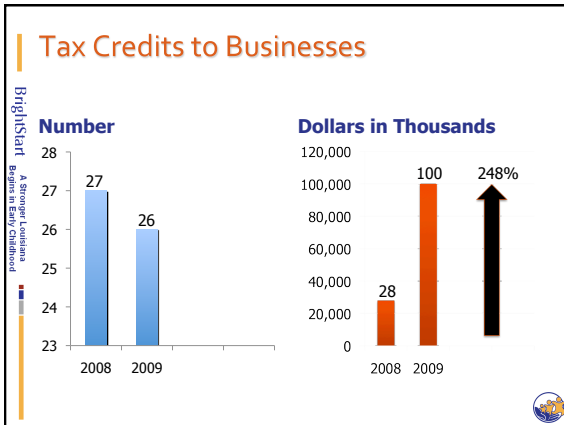
TAX CREDITS TO TEACHERS AND DIRECTORS

BrigitStart
A Stronger Louisiana
Begins in Early Childhood

Tax Credits to Directors and Teachers

Child Care Director and Teacher Qualification	Tax Credit
Level 4	\$3,000
Level 3	\$2,500
Level 2	\$2,000
Level 1	\$1,500





Contact Information

- Geoffrey Nagle, PhD
 - (504) 988-8241
 - gnagle@tulane.edu
- www.brightstartla.org

BrightStart
A Stronger Louisiana
Begins in Early Childhood